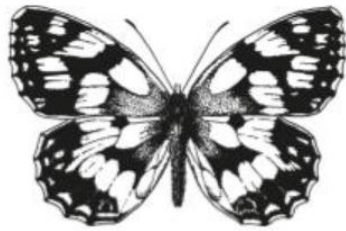


13th May 2026

Dear Parents/Carers of Maple (Y3)

Maple Y3) Trip to Saltwells National Nature Reserve, Dudley



SALTWELLS
National Nature Reserve

On Friday 12th June 2026, Maple (Year 3) will be going on a local trip to Saltwells National Nature Reserve, Dudley. *(This is the trip which was postponed in January 2026).*

The children will be walking around the local area with Forest School Leader trained staff from Saltwells who have a wealth of experience in leading school visits, as well as with Grace Mary staff. The children will be walking around the area on a 'geology walk'. They will be comparing different rocks, looking at their physical properties, discuss how fossils are formed and look at how humans have used the local geology.

We will be leaving school at approximately 9:00 am and the children will be back in school for their lunch. All children will need to bring a water bottle with them.

Please ensure that all children are wearing their full PE Kit for this trip. Please ensure that your child also has a warm coat, suitable shoes (i.e. if it has or is raining, then welly boots in a bag to change into) and a hat.

Should you have any further questions please contact the office.

Miss Flavell
Maple (Y3) Class Teacher

